

**30" LUXURY GRILL FEATURES**

Two 18-SR stainless steel high-performance Accufire™ main burners

Integrated Mega-Drive™ rotisserie system with dual infrared burners

Signature Taste™ integrated smoking system with dedicated burner and drawer for wood chunks

542 sq. in. actual grilling area

3-position warming rack stores up and out of the way when rotissing

Dual integrated high-intensity halogen work lights

User-friendly push-button ignition with sealed 110V AC power source

Optional infrared Sear Zone™

Optional standard cart

Available in LP or Natural Gas



Built-in Model



Standard Cart



Insulated Jacket

**AVAILABLE MODELS**

Built-in Models:

ALXE-30 – 30" Built-in Grill, 2 Burner, Rotis

ALXE-30SZ – 30" Built-in Grill, 1 Burner, Rotis, SearZone™

Cart Models:

ALXE-30C – 30" Cart Grill, 2 Burner, Rotis, Smoker, Double Doors

ALXE-30SZC – 30" Cart Grill, 1 Burner, Rotis, Smoker, SearZone™, Double Doors

**GRILL ACCESSORIES - ALFRESCO OFFERS THE INDUSTRY'S LARGEST SELECTION OF GRILL-TRANSFORMING OPTIONS**



**STEAMER /FRYER / PASTA COOKER**  
Drops into any Alfresco grill to blanch, steam, fry, or boil. Model: AG-SF



**SOLID FUEL INSERT**  
Transform your Alfresco gas grill into a wood-source cooking system. Model: SFI-POD



**INDIRECT ROASTING POD**  
Turn your grill into an amazing roasting oven with the indirect roasting pod. AIC-POD



**COMMERCIAL GRIDDLE**  
For teppanyaki, fajitas, and breakfast. Side Burner Model: AGSB-G, Grill Model: AGSQ-G



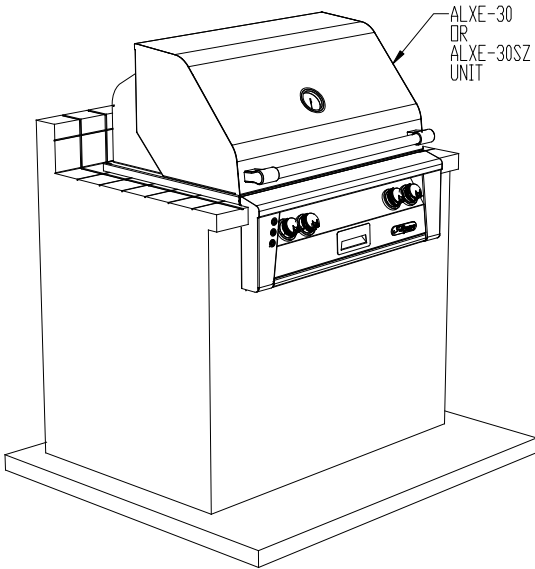
**DUAL SIDE BURNER**  
Features two burners each rated for 20,000 BTUs, and easily attaches to any Alfresco cart model grill for added cooking versatility. AXESB-2C (Cart)



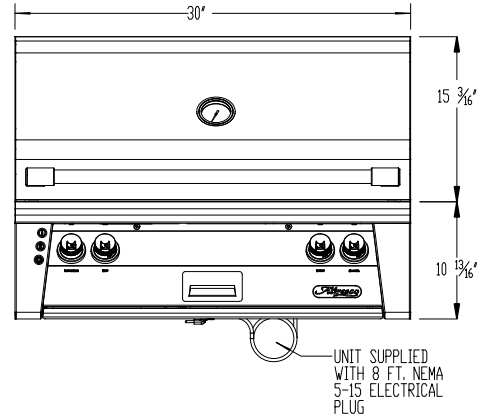
**WIND GUARDS**  
For windy exposed environments that may affect cooking performance and consistency. AWS-56 (Built-in), AWS-56C (Cart)



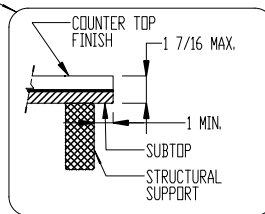
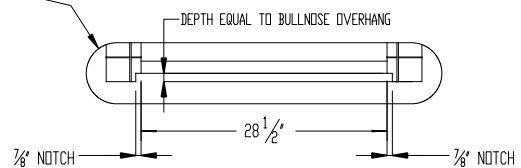
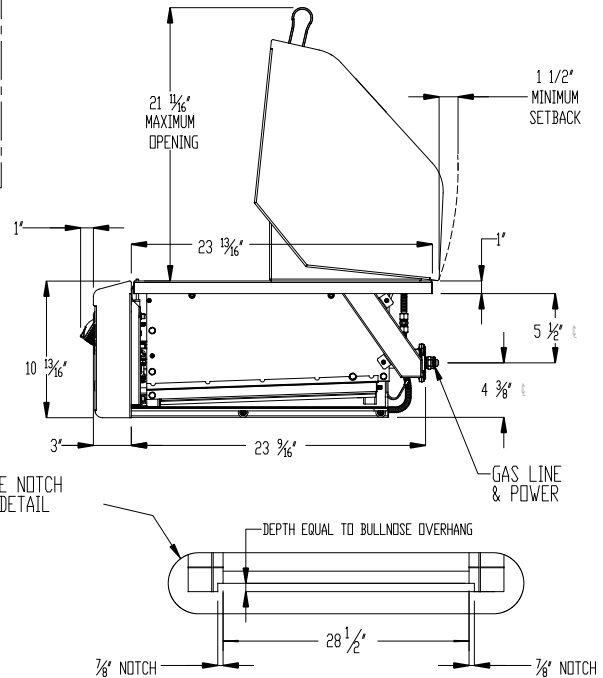
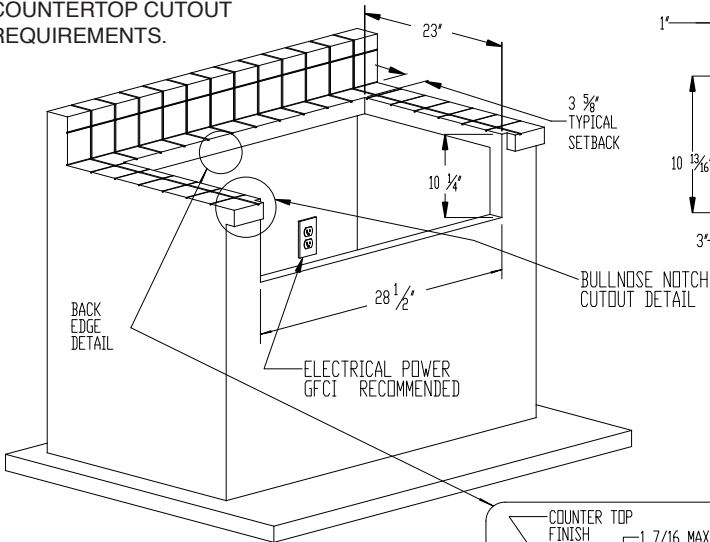
**GRILL COVER**  
Protect your investment from the elements when you're not cooking. AGV-56BFG (Built-in), AGV-56BFGC (Cart)



TYPICAL ALXE-30 / 30SZ INSTALLATION



COUNTERTOP CUTOUT REQUIREMENTS.

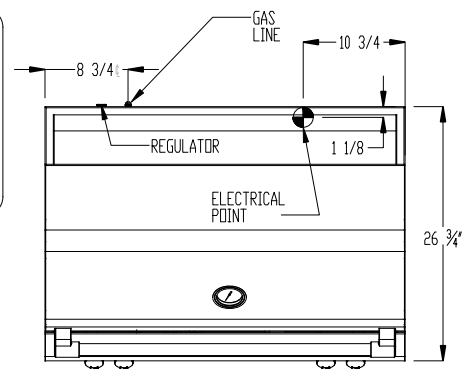


NOTE:

- Cutout shown for non-combustible construction only. Otherwise, use of AU-30 is required.
- Counter must have proper gas and power supplies for your Alfresco BBQ.

SPECIFICATIONS:

- BTUH = 148,000
- Fuel = NG @ 5" W.C. or LP @ 10" W.C.
- Electrical Power = 115 VAC / 1.44 A / 60Hz.
- Gas Connection = 1/2" NPT (NG) or 3/8" ODF (LP)



Alfresco Authorized Dealer:	Project/Client:	Date:
		Contact: